

## How to check the settings after FW updating for EK-100 & 300 series

1 Update FW according to "Update\_Projector\_EK-100&300\_FW\_SOP2\_upgrading.pdf".

2. After completing FW update, Projector will turn on automatically.

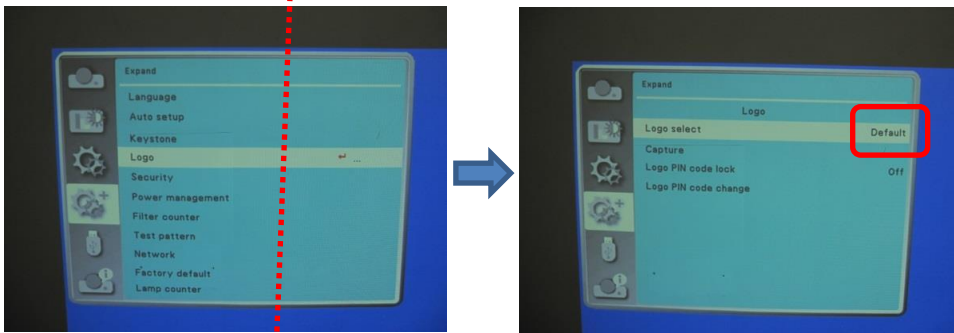
Please confirm it shows "EIKI" logo in countdown display.

If it shows the logo, go to step 3.

If you missed to check it or it didn't show "EIKI" logo, go to step 2-1.

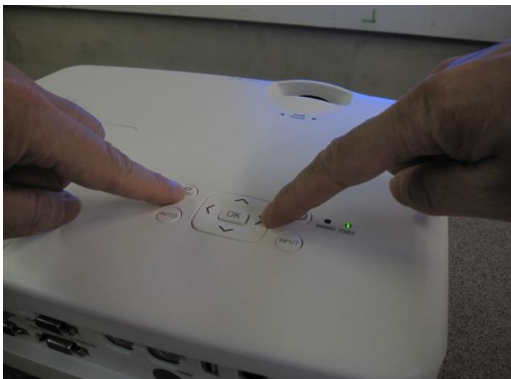


2-1 Change "logo select" to "Default", and turn the projector off and on.

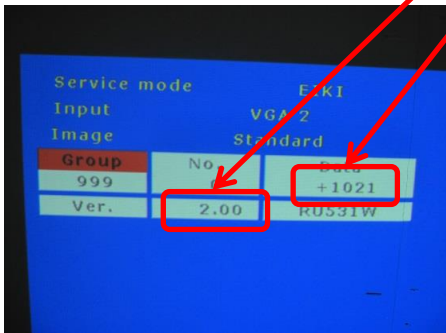


2-2. Please confirm it shows "EIKI" logo in countdown display.

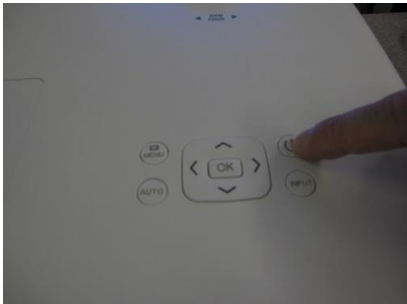
3. Press [Menu] and [>] simultaneously more than 5 seconds to show Service menu.



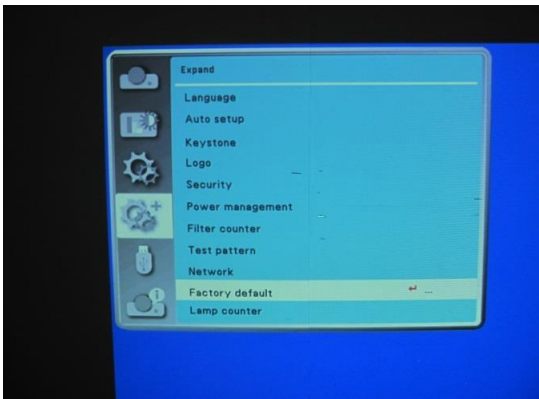
4. Please check the FW version. (ex. V 2.00\_1021)



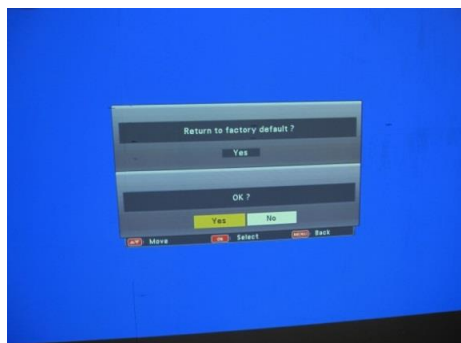
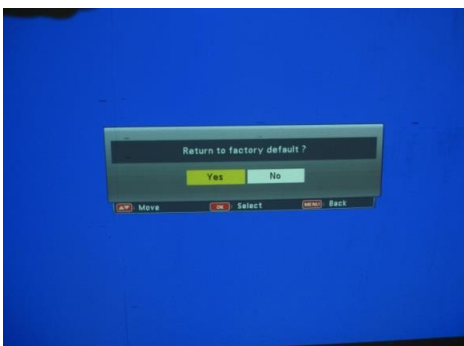
Press [Power] once to close Service menu.



5. Implement "Factory default" in the OSD menu.



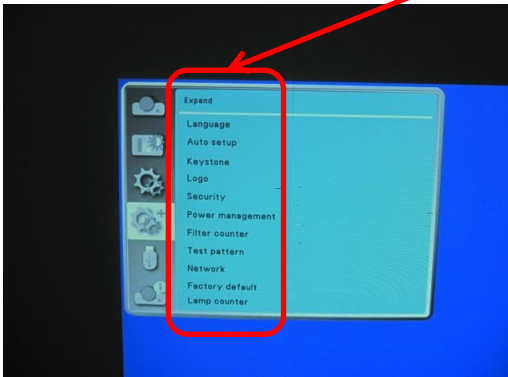
Press [↵] and select "Yes".



Wait for about 10 seconds.



6. Press [Menu] and please confirm the displayed language is "English" in the OSD menu.



7. If you confirmed that it is ok on step 2, 4, and 6, turn off the projector.

8. Done.